

SECTION II

TM9-2320-273-24P

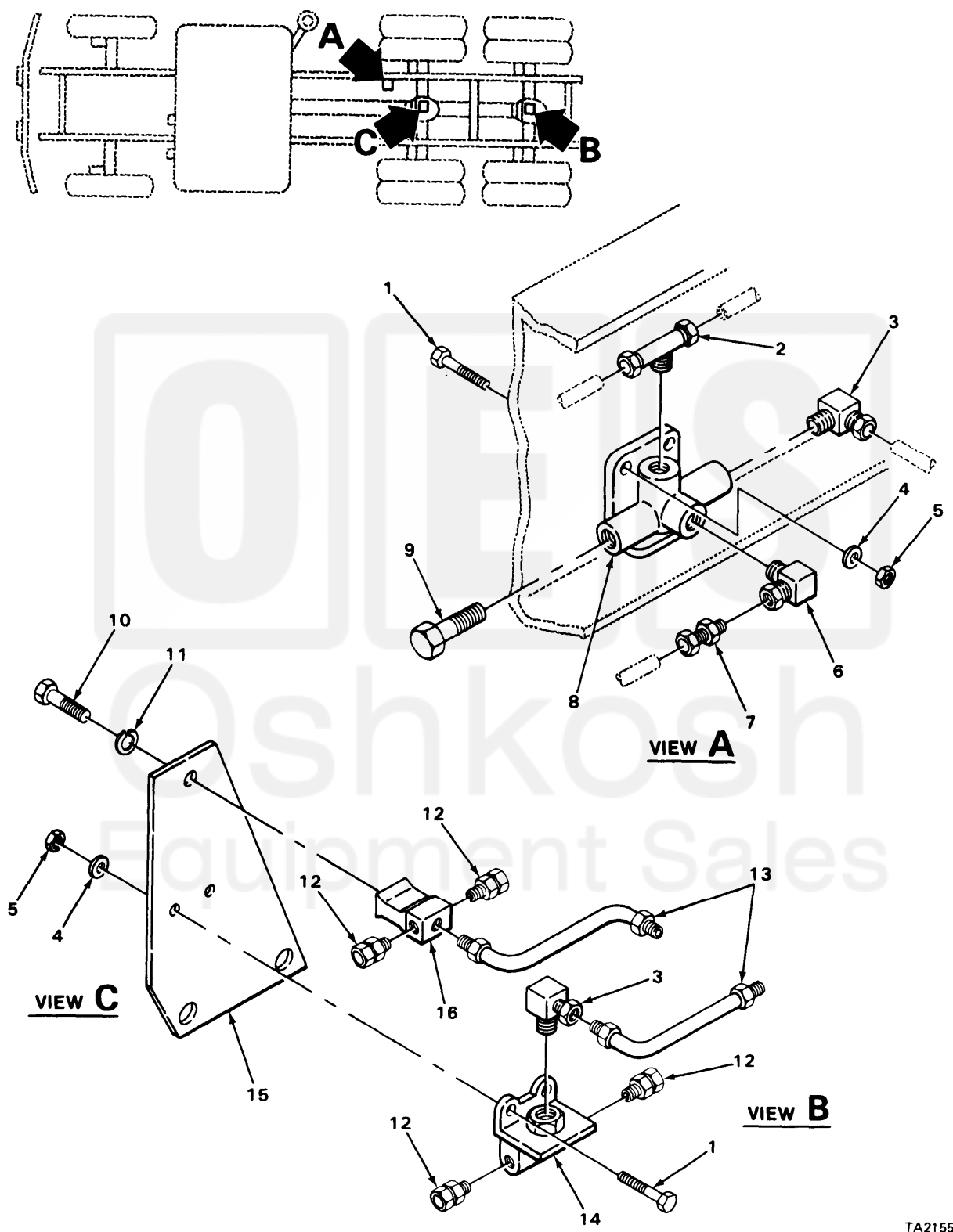


FIGURE 127. FRONT QUICK RELEASE VALVE (MODEL M915).

TA215506

SECTION II (1)	ITEM (2)	SMR (3)	FSCM (4)	PART NUMBER	DESCRIPTION AND USABLE ON CODE (UOC)	QTY (6)
					GROUP:1208 AIR BRAKE SYSTEM	
					FIGURE 127. FRONT QUICK RELEASE VALVE (MODEL 915).	
1	PAOZZ	24617	9418918	SCREW,CAP,HEXAGON UOC:U21	4	
2	PAOZZ	93061	272NTA-4-4	TEE UOC:U21	1	
3	PAOZZ	96906	MS39162-7	ELBOW UOC:U21	2	
4	PAOZZ	24617	2436162	WASHER,FLAT UOC:U21	4	
5	PAOZZ	24617	9422295	NUT,SELF-LOCKING,CO. UOC:U21	4	
6	PAOZZ	81343	6-4 120202BA(LONG NUT)	ELBOW UOC:U21,U24	1	
7	PAOZZ	79470	1468X10X6	ADAPTER,STRAIGHT,PI MALE UOC:U21	1	
8	PAOZZ	06853	289714	VALVE,QUICK RELEASE WITH DOUBLE CHECK UOC:U21	1	
9	PAOZZ	24617	444626	PLUG,PIPE UOC:U21	1	
10	PAOZZ	24617	9424338	BOLT,MACHINE UOC:U21	1	
11	PAOZZ	24617	9419871	WASHER,LOCK UOC:U21	1	
12	PAOZZ	93061	68NTA-8-6	ADAPTER,STRAIGHT,PI UOC:U21	4	
13	PAOZZ	34623	M/145-20022	HOSE ASSEMBLY,NONME UOC:U21	2	
14	PAOZZ	06853	229859	VALVE,SAFETY RELIEF UOC:U21	1	
15	PBOZZ	34623	MB242A-20150	BRACKET,MOUNTING UOC:U21	1	
16	PAOZZ	78330	4003	TEE,AIR LINE UOC:U21	1	
				END OF FIGURE		



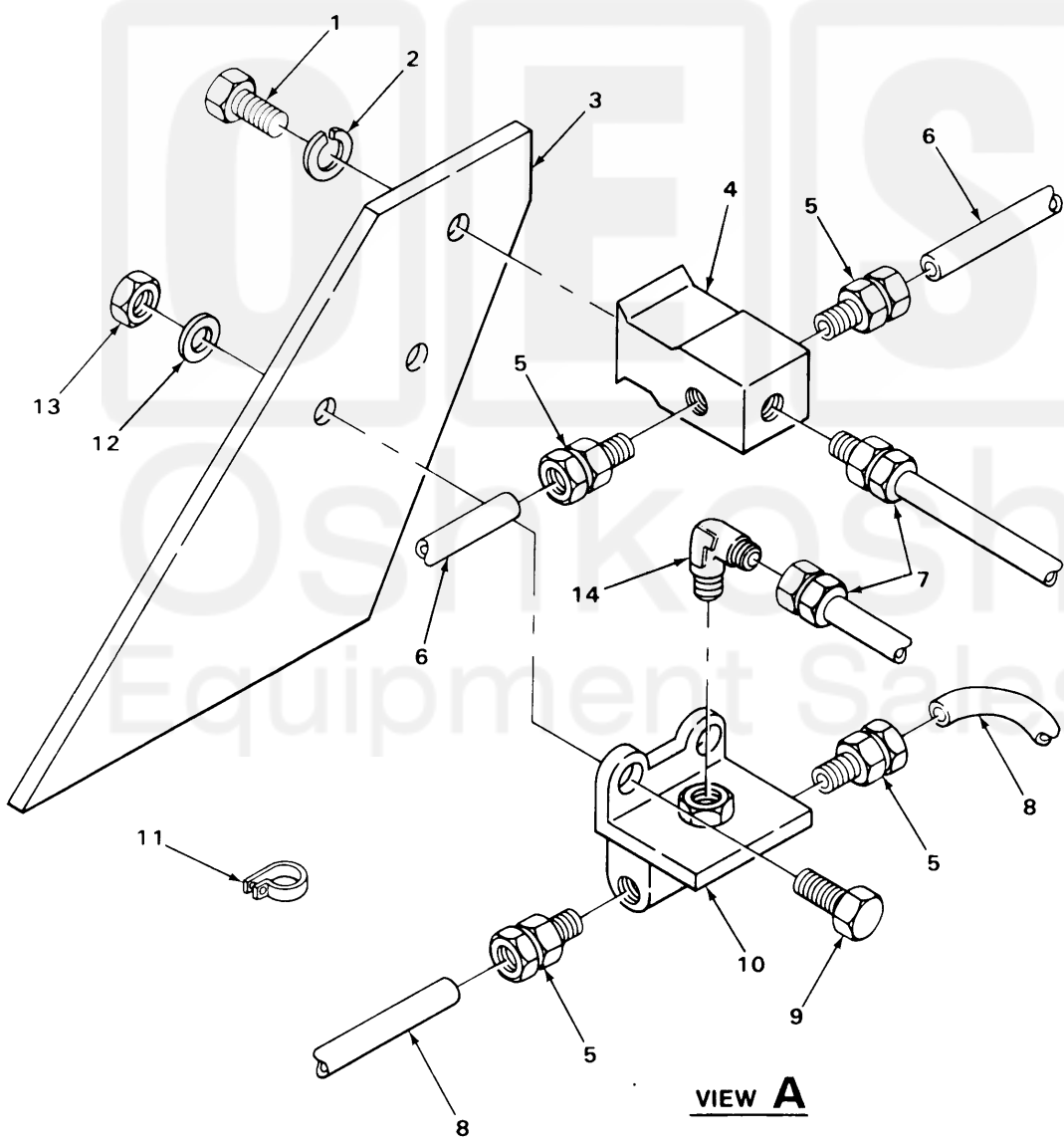
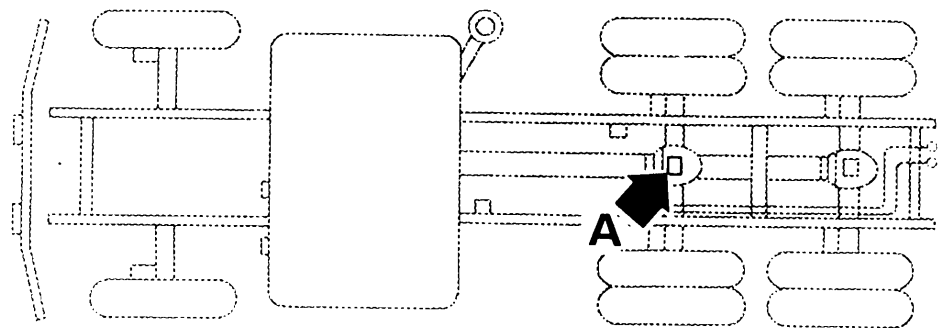
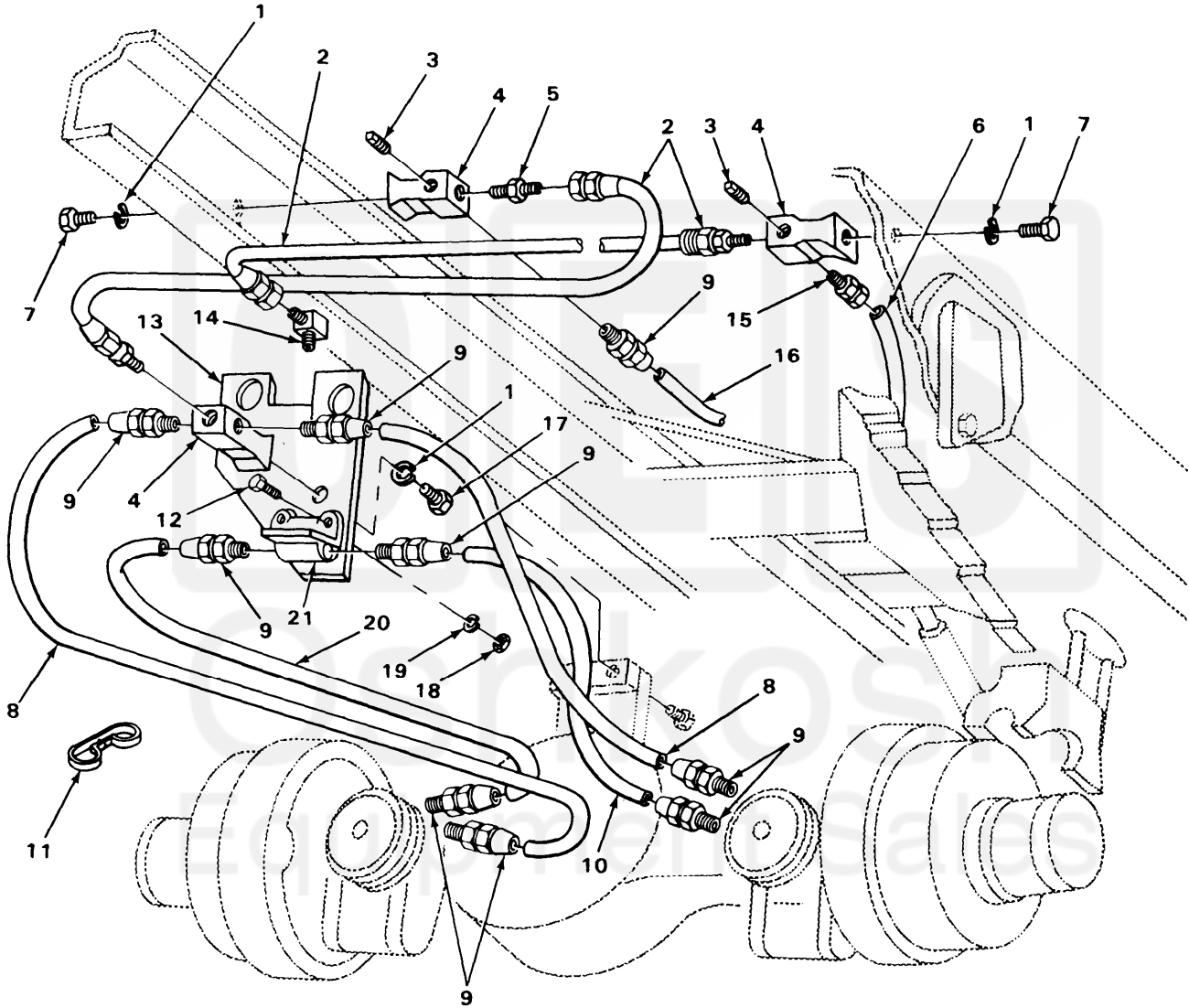


FIGURE 149. INTERMEDIATE QUICK RELEASE VALVE (MODELS M916 AND M918).

TA215528

SECTION II (1)	ITEM (2)	SMR (3)	FSCM (4)	PART NUMBER	DESCRIPTION AND USABLE ON CODE (UOC)	QTY (6)
					GROUP:1208 AIR BRAKE STSTEM	
					FIGURE 149. INTERMEDIATE QUICK RELEASE VALVE (MODELS M916 AND M918)	
1	PAOZZ	24617	9424338		BOLT, MACHINE UOC:U22,U24	1
2	PAOZZ	24617	9419871		WASHER, LOCK UOC:U22,U24	1
3	PBOZZ	34623	MB242A-20171		BRACKET UCO:U22,U24	1
4	PAOZZ	78330	4003		TEE, AIR LINE UOC:U22,U24	1
5	PAOZZ	93061	68NTA-8-6		ADAPTER, STRAIGHT, PI UOC:U22,U24	4
6	MOOZZ	34623	M/357-20115		TUBE, NONMETALLIC MAKE FROM P/N 0608 UOC:U22,U24	2
7	PAOZZ	34623	M/145-20022		HOSE ASSEMBLY, NONME UOC:U22,U24	2
8	MOOZZ	34623	M/357-20057		TUBE, NONMETALLIC MAKE FROM P/N C608 UOC:U22,U24	2
9	PAOZZ	24617	9418918		SCREW, CAP, HEXAGON UOC:U22,U24	2
10	PAOZZ	06853	229859		VALVE, SAFETY RELIEF UOC:U22,U24	1
11	PAOZZ	96906	MS21333-106		CLAMP, LOOP UOC:U22,U24	1
12	PAOZZ	24617	2436162		WASHER, FLAT UOC:U22,U24	2
13	PAOZZ	24617	9422295		NUT, SELF-LOCKING, CO UOC:LU22,U24	2
14	PAOZZ	96906	MS39162-7		ELBOW UOC:U22,U24	1
					END OF FIGURE	





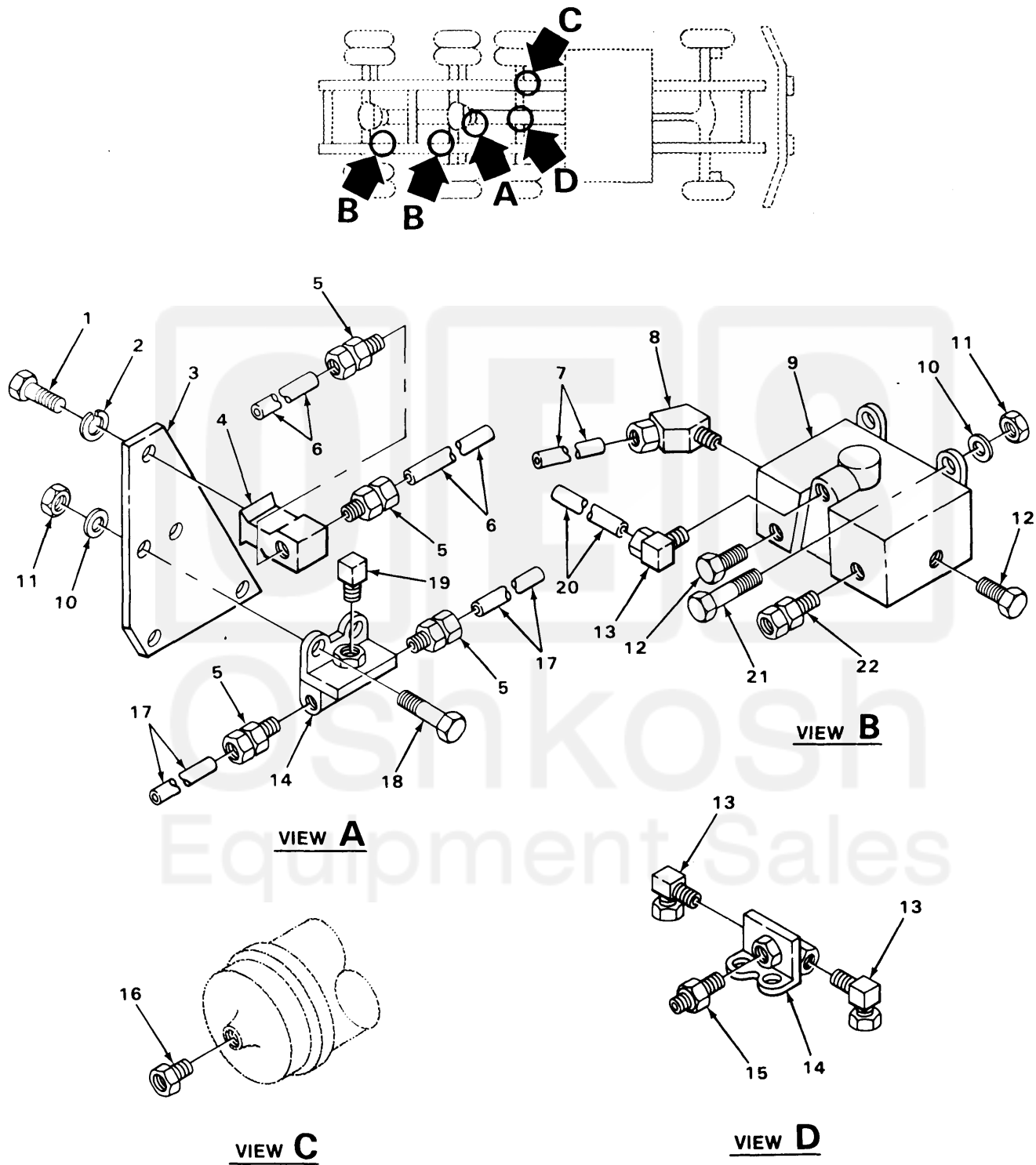
TA215533

FIGURE 154. REAR BRAKE AIR LINES AND FITTINGS (MODELS M916 AND M918).

SECTION II (1)	ITEM (2)	SMR (3)	FSCM (4)	PART NUMBER	DESCRIPTION AND USABLE ON CODE (UOC)	QTY (6)
					GROUP:1208 AIR BRAKE SYSTEM	
					FIGURE 154. REAR BRAKE AIR LINES AND FITTINGS (MODELS M916 AND M918).	
1	PAOZZ	24617	9419871		WASHER, LOCK UOC:U22,U24	3
2	PAOZZ	34623	M/145-20022		HOSE ASSEMBLY, NONME UOC:U22,U24	2
3	PAOZZ	24617	444626		PLUG, PIPE UOC:U22,U24	2
4	PAOZZ	78330	4003		TEE, AIR LINE UOC:U22,U24	3
5	PBOZZ	03924	1011-6-813		UNION, PIP TO HOSE UOC:U22,U24	1
6	MOOZZ	34623	M/357-20008		HOSE, NONMETALLIC MAKE FROM P/N CPR104420-4 UOC:U22,U24	1
7	PAOZZ	24617	9421235		SCREW, CAP, HEXAGON UOC:U22,U24	2
8	MOOZZ	34623	M/357-20114		TUBE, NONMETALLIC MAKE FROM P/N C608 UOC:U22,U24	2
9	PAOZZ	93061	68NTA-8-6		ADAPTER, STRAIGHT, PI UOC:U22,U24	10
10	MOOZZ	34623	M/357-20116		TUBE, NONMETALLIC MAKE FROM P/N C608 UOC:U22,U24	1
11	PAOZZ	98343	1507		BRAKE HOSE ASSEMBLY UOC:U22,U24	1
12	PAOZZ	24617	9418918		SCREW, CAP, HEXAGON UOC:U22,U24	1
13	PBOZZ	34623	MD242A-20157		BRACKET, MOUNTING UOC:U22,U24	1
14	PAOZZ	96906	MS39162-7		ELBOW UOC:U22,U24	1
15	PAOZZ	79470	1468X10X6		ADAPTER, STRAIGHT, PI UOC:U22,U24	1
16	MOOZZ	34623	M/357-20113		TUBING, NONMETALLIC MAKE FROM P/N C608 UOC:U22,U24	1
17	PAOZZ	24617	9424338		BOLT, MACHINE UOC:U22,U24	1
18	PAOZZ	24617	9422295		NUT, SELF-LOCKING, CO UOC:U22,U24	1
19	PAOZZ	24617	2436162		WASHER, FLAT UOC:U22,U24	1
20	MOOZZ	34623	M/357-20112		TUBE, NONMETALLIC MAKE FROM P/N C608 UOC:U22,U24	1
21	PAOZZ	06853	229859		VALVE, SAFETY RELIEF UOC:U22,U24	1

END OF FIGURE

Oshkosh  
Equipment Sales



TA217090

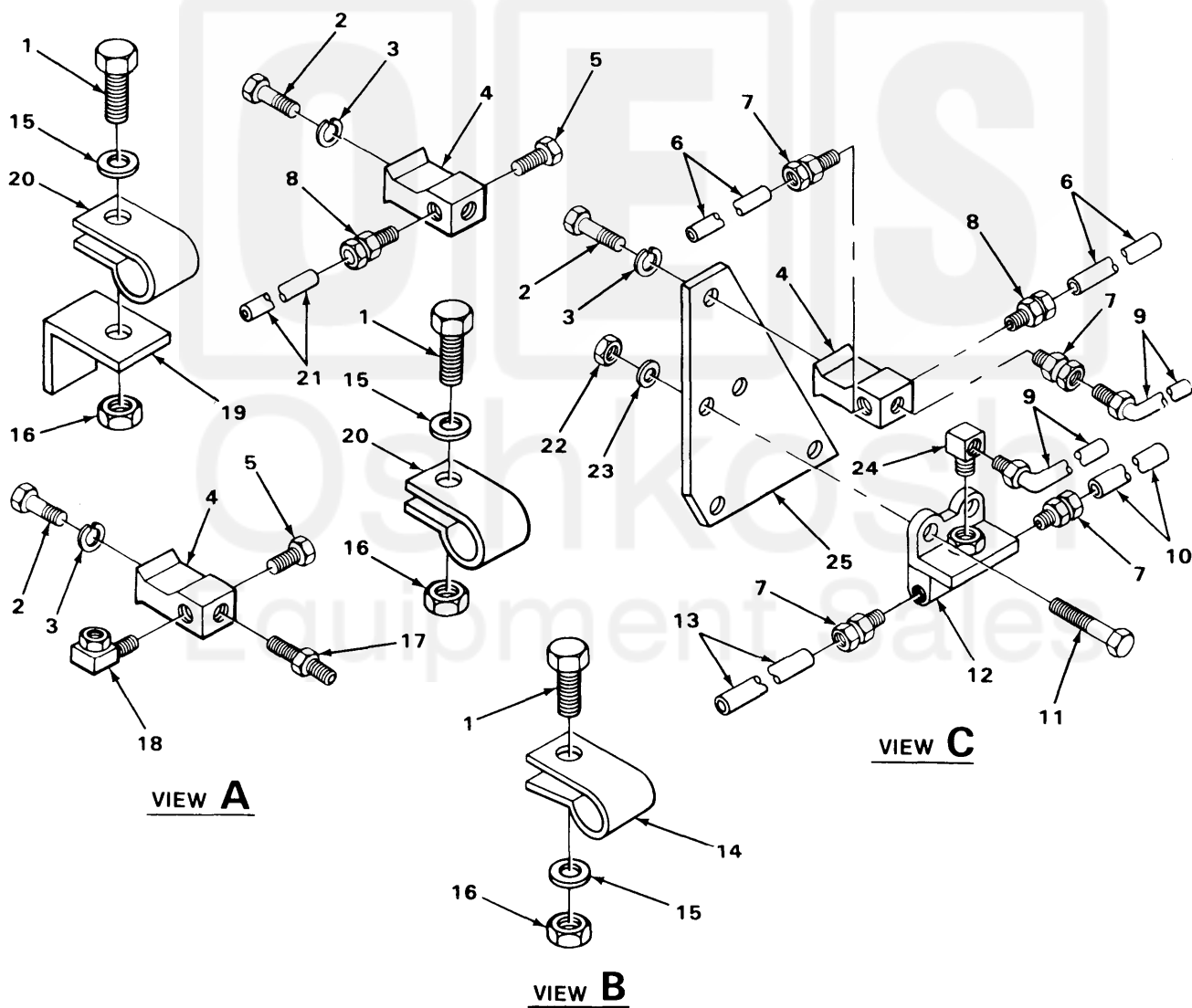
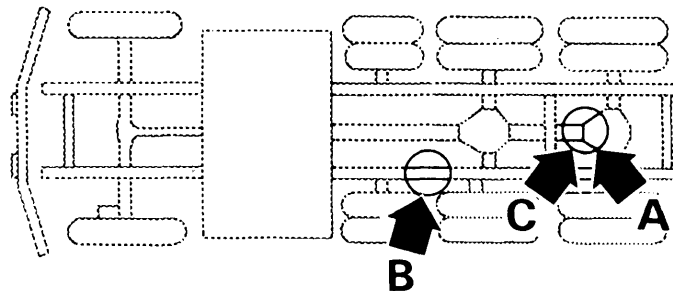
FIGURE 169. QUICK RELEASE VALVE, RELAY VALVE, LINES AND FITTINGS (MODELS M917, M919 AND M920).

SECTION II (1)	ITEM (2)	SMR (3)	FSCM (4)	PART (4)	DESCRIPTION AND USABLE ON CODE (UOC) (5)	QTY (6)
				TM9-2320-273-24P		
					GROUP:1208 AIR BRAKE SYSTEM	
					FIGURE 169. QUICK RELEASE VALVE, RELAY VALVE, LINES AND FITTINGS (MODELS M917, M919 AND M920).	
1	PAOZZ	24617	9424338	BOLT, MACHINE	UOC:U23,U25,U26	1
2	PAOZZ	24617	9419871	WASHER, LOCK	UOC:U23,U25,U26	1
3	PBOZZ	34623	MB242A-20171	BRACKET	UOC:U23,U25,U26	1
4	PAOZZ	78330	4003	TEE	UOC:U23,U25,U26	1
5	PAOZZ	93061	68NTA-8-6	ADAPTER, STRAIGHT, PI	UOC:U23,U25,U26	4
6	MOOZZ	34623	M/357-20115	TUBE, NONMETALLIC MAKE FROM P/N C608	UOC:U23,U25,U26	2
7	MOOZZ	34623	M/357-20080	TUBE, NONMETALLIC MAKE FROM P/N CPR104420-4	UOC:U23,U25,U26	2
8	PAOZZ	79470	1480X8X8	ELBOW	UOC:U23,U25,U26	2
9	PAOZZ	06721	N-30096-L	VALVE, DIAPHRAGM, STO	UOC:U23,U25,U26	2
10	PAOZZ	24617	2436162	WASHER, FLAT	UOC:U23,U25,U26	6
11	PAOZZ	24617	9422295	NUT, SELF-LOCKING, CO	UOC:U23,U25,U26	6
12	PAOZZ	96906	MS20913-4	PLUG, PIPE	UOC:U21,U25,U26	4
13	PAOZZ	10988	222-2645	ELBOW	UOC:U21,U25,U26	3
14	PAOZZ	06853	229859	VALVE, SAFETY RELIEF	UOC:U23,U25,U26	1
15	PAOZZ	79470	1468X10X6	ADAPTER, STRAIGHT, PI	UOC:U22,U23,U24,U25,U26	1
16	PAOZZ	01276	2081-12-8S	BUSHING, PIPE	UOC:U23,U25,U26	1
17	MOOZZ	34623	M/357-20057	TUBE, NONMETALLIC MAKE FROM P/N C608	UOC:U23,U25,U26	2
18	PAOZZ	24617	9418918	SCREW, CAP, HEXAGON	UOC:U23,U25,U26	2
19	PAOZZ	96906	MS39162-7	ELBOW	UOC:U23,U25,U26	1
20	MOOZZ	34623	M/357-20099	TUBE, NONMETALLIC MAKE FROM P/N CPR104420-1	UOC:U23,U25,U26	1
21	PFOZZ	24617	9418992	BOLT, MACHINE	UOC:U23,U25,U26	4
22	PAOZZ	79470	1468X10	ADAPTER, STRAIGHT, PI	UOC:U23,U25,U26	3

END OF FIGURE

Equipment Sales





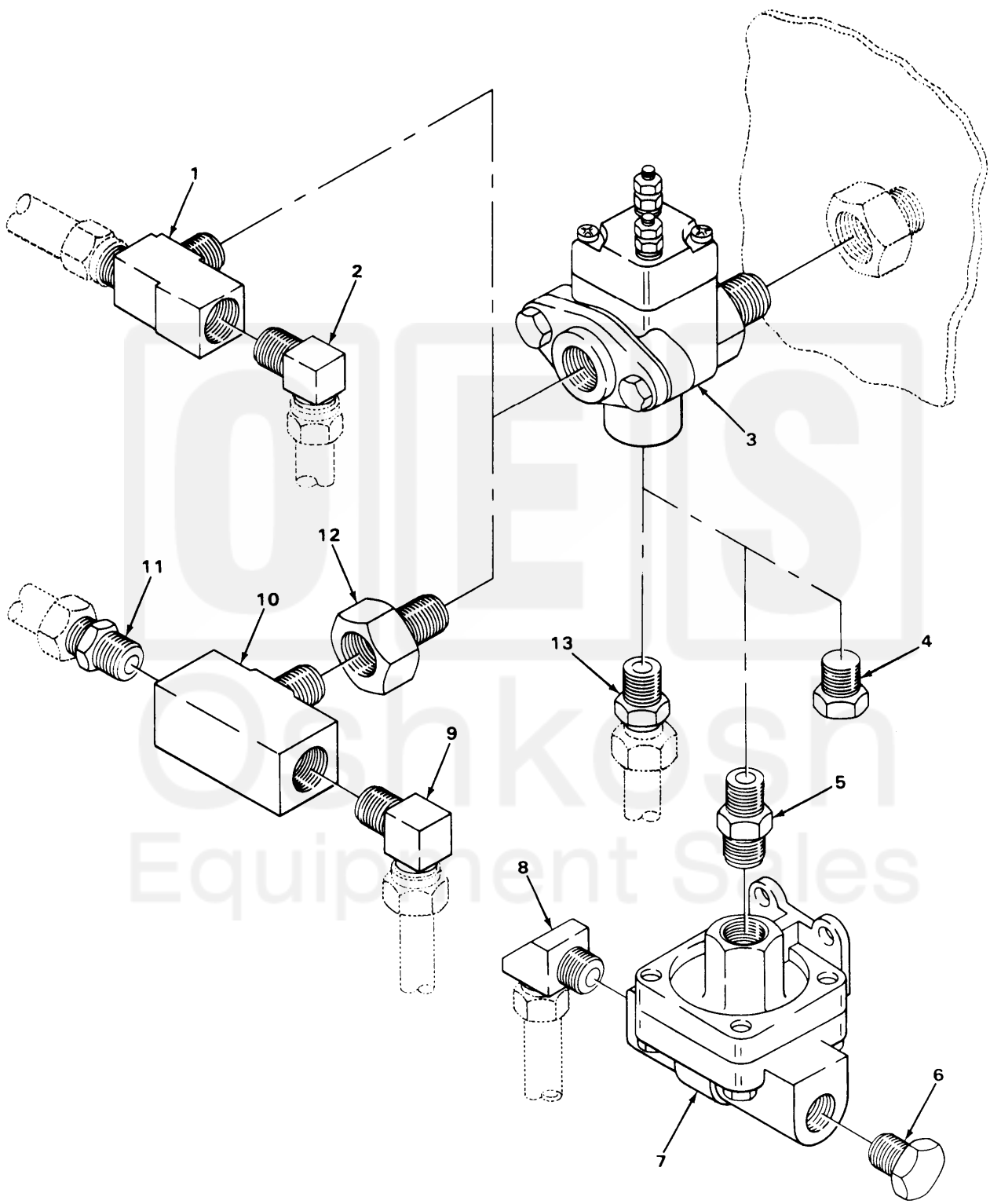
TA217091

FIGURE 170 FRONT QUICK RELEASE VALVE, LINES AND FITTINGS (MODELS M917, M919 AND M920).

SECTION II (1)	ITEM (2)	SMR (3)	FSCM (4)	PART NUMBER	DESCRIPTION AND USABLE ON CODE (UOC)	QTY (6)
TM9-2320-273-24P						
GROUP:1208 AIR BRAKE SYSTEM						
FIGURE 170. FRONT QUICK RELEASE VALVE, LINES AND FITTINGS (MODELS M919 AND M920).						
1	PAOZZ	96039	1-4-20X3-4	SCREW,CAP,HEXAGON	UOC:U23,U25,U26	3
2	PAOZZ	24617	9424338	BOLT,MACHINE	UOC:U23,U25,U26	3
3	PAOZZ	24617	9419871	WASHER,LOCK	UOC:U23,U25,U26	3
4	PAOZZ	78330	4003	TEE	UOC:U23,U25,U26	3
5	PAOZZ	24617	444626	PLUG,PIPE	UOC:U23,U25,U26	2
6	MOOZZ	34623	M/357-20114	TUBE,NONMETALLIC MAKE FROM P/N C608	UOC:U23,U25,U26	2
7	PAOZZ	93061	68NTA-8-6	ADAPTER,STRAIGHT,PI	UOC:U23,U25,U26	4
8	PAOZZ	79470	1468X10	ADAPTER,STRAIGHT,PI	UOC:U23,U25,U26	2
9	PAOZZ	34623	M/145-20022	HOSE ASSEMBLY,NONME	UOC:U23,U25,U26	2
10	MOOZZ	34623	M/357-20116	TUBE,NONMETALLIC MAKE FROM P/N C608	UOC:U23,U25,U26	1
11	PAOZZ	24617	9418918	SCREW,CAP,HEXAGON	UOC:U23,U25,U26	2
12	PAOZZ	06853	229859	VALVE,SAFETY RELIEF	UOC:U23,U25,U26	1
13	MOOZZ	34623	M/357-20112	TUBE,NONMETALLIC MAKE FROM P/N C608	UOC:U23,U25,U26	1
14	PFOZZ	75272	COV-1109	CLAMP,LOOP	UOC:U23,U25,U26	1
15	PAOZZ	24617	2436161	WASHER,FLAT	UOC:U23,U25,U26	3
16	PAOZZ	24617	9422273	NUT	UOC:U23,U25,U26	3
17	PAOZZ	93061	68NTA-8-4	ADAPTER,STRAIGHT,PI	UOC:U23,U25,U26	1
18	PAOZZ	79470	1469X8	ELBOW	UOC:U23,U25,U26	1
19	PFOZZ	34623	M/10-20105	BRACKET,ANGLE	UOC:U22,U24,U25,U26	1
20	PAOZZ	75272	C0V0909	CLAMP,LOOP	UOC:U23,U25,U26	2
21	MOOZZ	34623	M/357-20113	TUBE,NONMETALLIC MAKE FROM P/N C608	UOC:U23,U25,U26	1
22	PAOZZ	24617	9422295	NUT,SELF-LOCKING,CO	UOC:U23,U25,U26	2
23	PAOZZ	24617	2436162	WASHER,FLAT	UOC:U23,U25,U26	2

SECTION II

TM9-2320-273-24P



TA217109

FIGURE 186. QUICK RELEASE VALVE,

SECTION II (1)	ITEM (2)	SMR (3)	FSCM (4)	PART NUMBER	DESCRIPTION AND USABLE ON CODE (UOC)	QTY (6)
					GROUP:1208 AIR BRAKE SYSTEM	
					FIGURE 186. QUICK RELEASE VALVE.	
1	PAOZZ	79470	1482X6X4X4	TEE	UOC:U21	1
2	PAOZZ	10988	222-2645	ELBOW	UOC:U21	1
3	PAOZZ	06853	228165	SWITCH,ELECTRICAL		1
4	PAOZZ	24617	444620	PLUG,PIPE	UOC:U24,U25	1
5	PAOZZ	24617	443990	REDUCER,PIPE	UOC:U23,U26	1
6	PAOZZ	24617	444699	PLUG,PIPE	UOC:U23,U26	1
7	PAOZZ	06853	229859	VALVE,SAFETY RELIEF	UOC:U23,U26	1
8	PAOZZ	30327	269N3-8X3-8NPT	ELBOW	UOC:U23,U26	1
9	PAOZZ	93061	269NTA-8-6	ELBOW	UOC:U22,U23,U24,U25,U26	1
10	PAOZZ	72582	444136	TEE MALE	UOC:U22,U23,U24,U25,U26	1
11	PAOZZ	93061	68NTA-8-6	ADAPTER,STRAIGHT,PI	UOC:U22,U23,U24,U25,U26	1
12	PAOZZ	79470	3206X4	REDUCER,PIPE	UOC:U22,U23,U25,U26	1
13	PAOZZ	93061	68NTA-6-4	ADAPTER,STRAIGHT,PI	UOC:U21	1

END OF FIGURE

